



VISUAL ART VIRTUAL LEARNING

# ART II: WHAT'S UP WEDNESDAY

APRIL 29TH, 2020



LESSON: 04-29-2020

## OBJECTIVE/LEARNING TARGET:

I can compare and contrast viewing and experiencing  
collections and exhibitions of art in different venues

&

How technologies have changed the way artwork is experienced

Take a closer  
look at a Famous  
Artist and their  
work

Explore a  
technique or  
Artist happening  
somewhere in the  
world right now!

Figure drawing  
challenges

Masterpiece  
Monday

Technique  
Tuesday

What's Up  
Wednesday

Thumbnail  
Thursday

Figure  
Friday

Practice Skills  
Known and new  
techniques

Small, loose  
sketches of  
objects we find  
or design  
concepts

# WHAT'S UP WEDNESDAY?

*Did you know that...*



Kansas City is lucky to be home to not only

The Nelson Atkins Museum of Art

but also



The Kemper Museum of Contemporary Art?

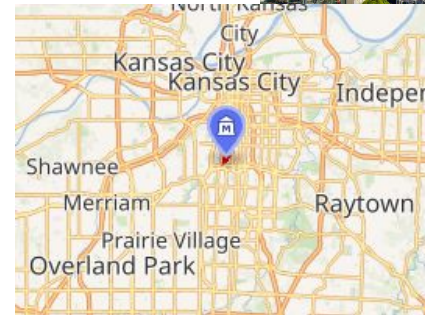
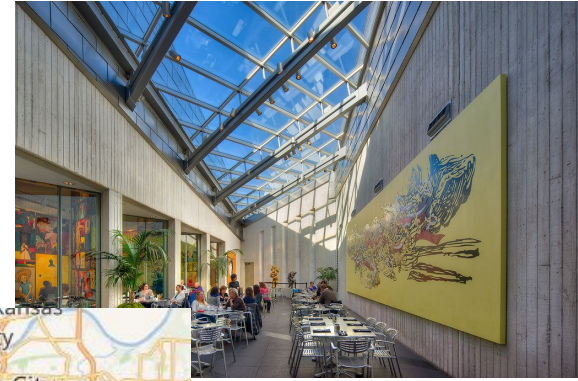
# WHERE IN KANSAS CITY?

4420 Warwick Blvd, Kansas City, MO 64111



# KEMPER MUSEUM OF CONTEMPORARY ART

- ❖ Established in 1994
- ❖ It was Missouri's first and largest museum of contemporary art
- ❖ Admission is free!
- ❖ It is located near both the Nelson Atkins Museum of Art and the Kansas City Art Institute



# EXPLORING ART *VIRTUALLY*

Like many other museums, at this time the Kemper is closed due to the COVID-19 Pandemic.

**Follow the links below to explore the Kemper's collections-**

To access the museum's **Permanent Collection**, follow this link: <https://www.kemperart.org/permanent-collection>

If you are interested in seeing the **Current Exhibitions** follow this link: <https://www.kemperart.org/current-exhibitions>

For the Google Arts & Culture page on the Kemper, follow this link: <https://artsandculture.google.com/partner/kemper-museum-of-contemporary-art>

# DO YOU THINK...

That a Virtual tour can be as impactful as getting to see and interact with art up close and in person? Does this matter?

That taking a virtual tour allows you to connect with others as you view art like you might be able in a museum?



# EXPERIENCE: *INSIDE AND OUT*

- ❖ Like many museums, some of the Kemper's works are **outdoor sculptures** sprinkled around its grounds.
- ❖ Within the museum is a **restaurant**: Cafe Sebastienne, which is filled with an artful ambiance and delicious food.
- ❖ Also within the museum, is a **gift shop** where Artwork, merchandise and other materials can be purchased.



# THE MUSEUM EXPERIENCE

**Docents:** these are people that act as guides through a museum, they often give tours and more information to museum-goers to assist them in having a more meaningful experience at a museum

**Community Events:** many museums offer events throughout the year to Celebrate things like Culture, Community, Holidays and even just The Arts. These events can be fundraisers for museums themselves or for the benefit of charities or organizations that the museums support.

# THINGS TO CONSIDER...

Have you ever personally had the opportunity to go to an Art museum?

How might a Virtual Tour of a museum differ from going to a museum?

You may not get to see the art in person, but what are some of the benefits to virtually touring a museum? What about the downfalls?

Do you think that physical museums will ever become outdated or unnecessary? Why or why not?

# ADDITIONAL RESOURCES

The Kemper Teen Arts Council <https://www.kemperart.org/teens>

<https://www.kemperart.org/>

POSTERS WE USE TO  
TEACH YOU...

# ELEMENTS & PRINCIPLES OF ART

## LINE

Line is the path of a point moving through space



## PATTERN

Pattern refers to the repetition or reoccurrence of a design element, exact or varied, which establishes a visual beat.



## SHAPE / FORM



Shape implies spatial form and is usually perceived as two-dimensional. Form has depth, length, and width and resides in space. It is perceived as three-dimensional.

## RHYTHM / MOVEMENT

Rhythm or movement refers to the suggestion of motion through the use of various elements.



## COLOR

Colors all come from the three primaries and black and white. They have three properties – hue, value, and intensity.



## PROPORTION / SCALE

Proportion is the size relationship of parts to a whole and to one another. Scale refers to relating size to a constant, such as a human body.



## VALUE

Value refers to relative lightness and darkness and is perceived in terms of varying levels of contrast.



## BALANCE

Balance is the impression of equilibrium in a pictorial or sculptural composition. Balance is often referred to as symmetrical, asymmetrical, or radial.



## TEXTURE

Texture refers to the tactile qualities of a surface (actual) or to the visual representation of such surface qualities (implied).



## UNITY

Unity is achieved when the components of a work of art are perceived as harmonious, giving the work a sense of completion.



## SPACE / PERSPECTIVE

Space refers to the area in which art is organized. Perspective is representing a volume of space or a 3-dimensional object on a flat surface.



## EMPHASIS

Emphasis refers to the created center of interest, the place in an artwork where your eye first lands.



# HOW TO SHOW US YOUR CREATIONS...

We'd love to see your  
work!!!

**Email your art teacher and  
be sure to tag your  
principal as well.**

**abigail\_gordon  
@idschools.org**

(You may send examples to your own art teacher!)